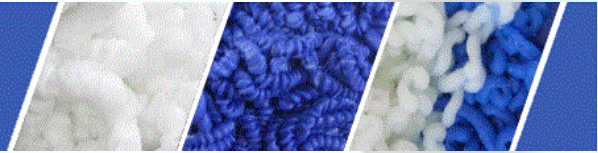
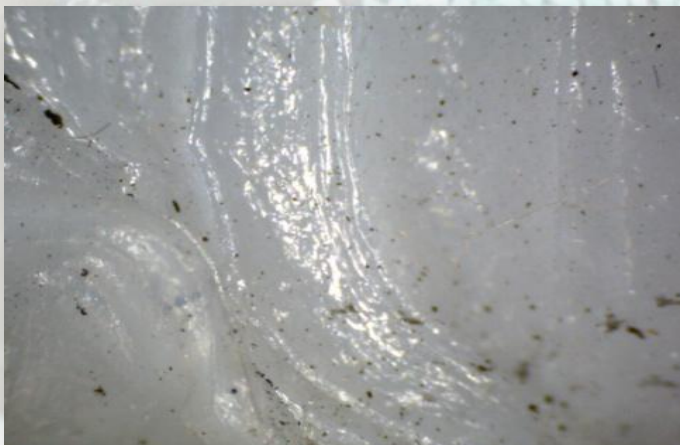
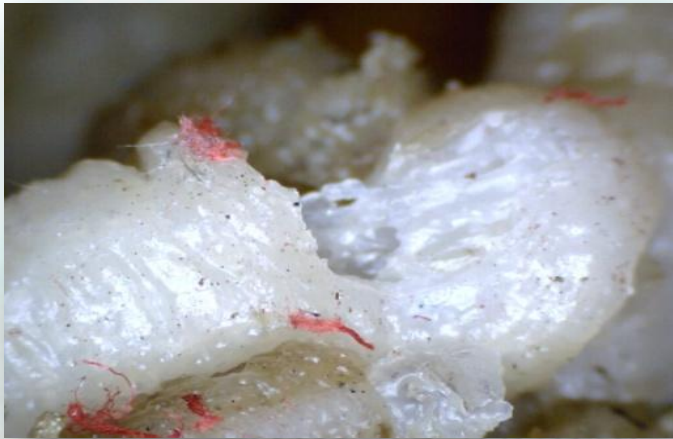




C.J.P. Sales Ltd.
PVC and Polymer Distribution



What Causes Contamination?



Black Specs: as these coatings take hold they become very firm and start to carbonise, each time the machine temperatures increases and decreases, the degradation becomes more severe. As new prime materials flow over the contamination it slowly accumulates. As a result, when using stiffer or abrasive filled polymers, or changing from high to lower temperature ranges, the little bits start breaking away causing black specs. At this stage the options are a mechanical strip down or many kilograms of wasted polymer.

PP on an injection screw